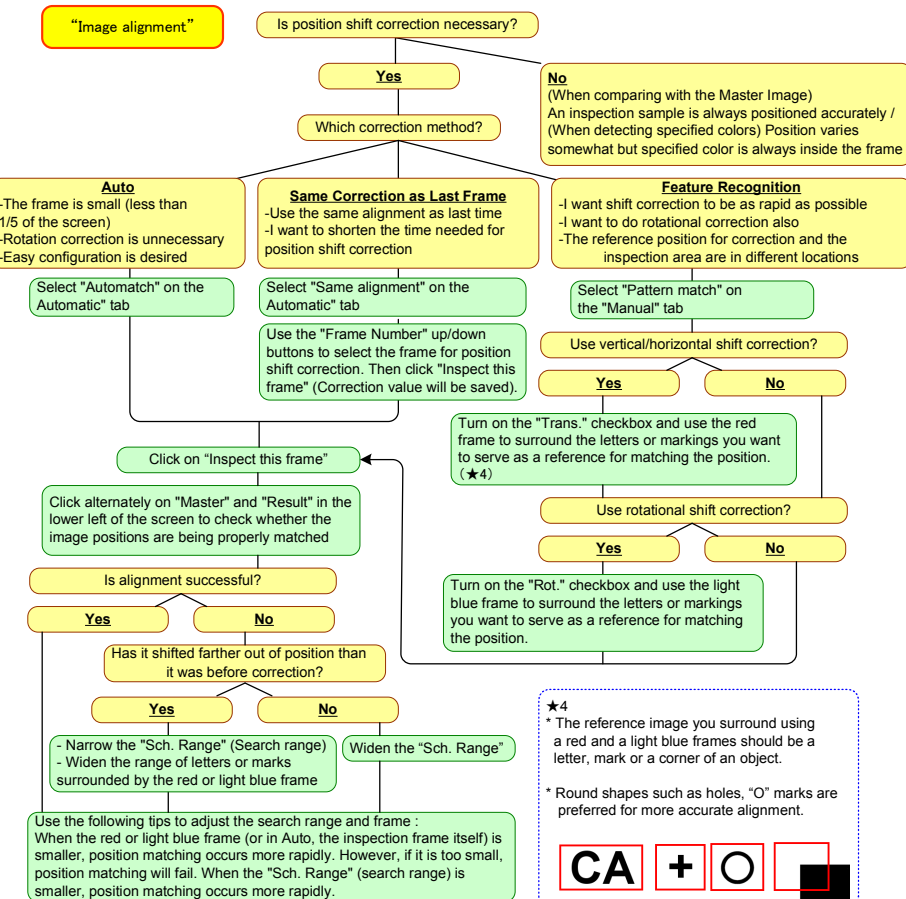
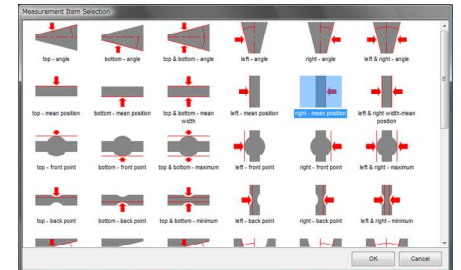
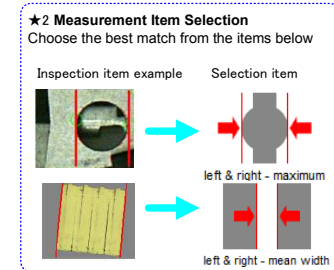
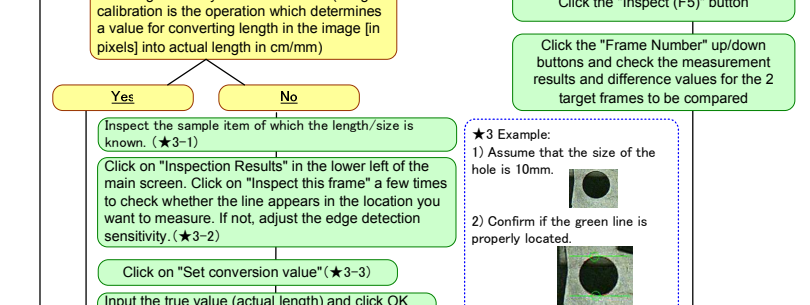
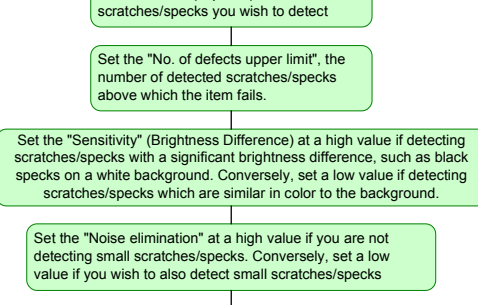
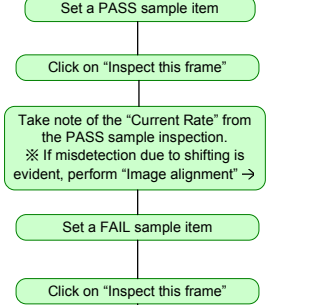
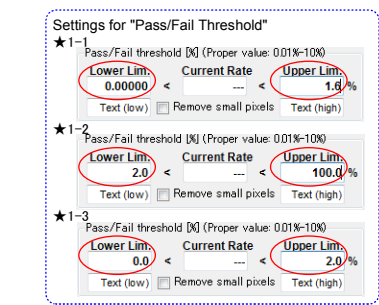
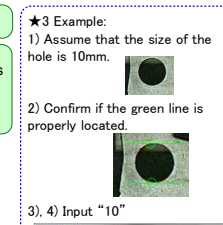
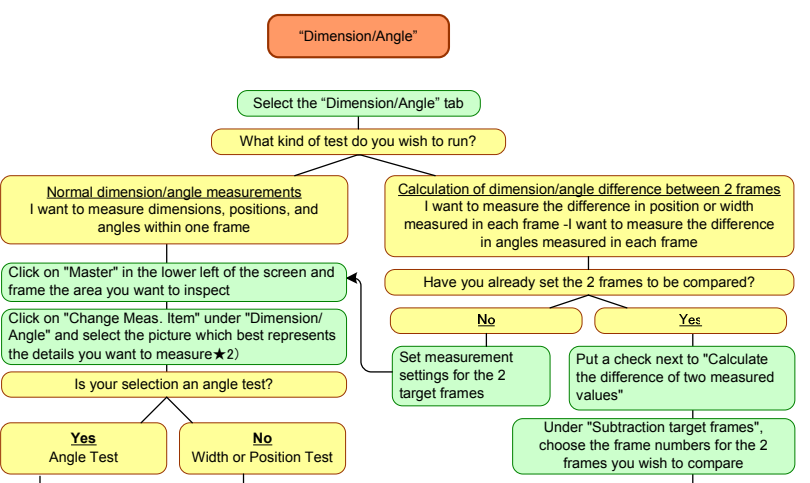
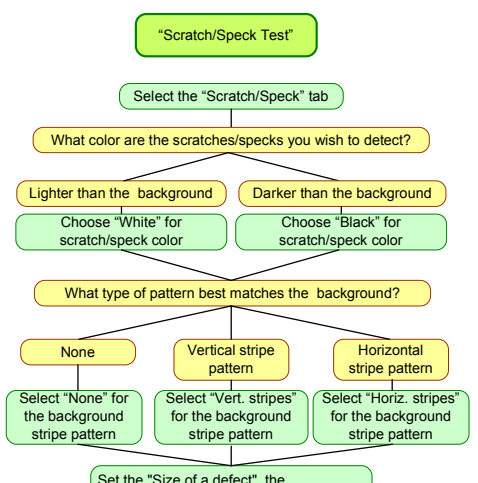
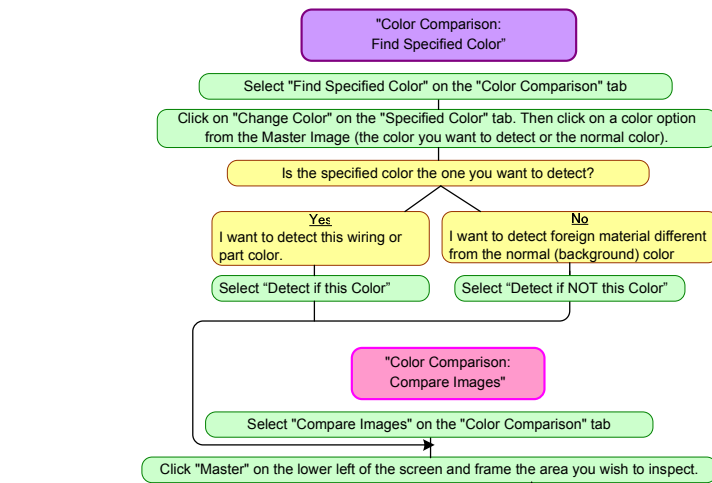


Inspection Result Item Detail

Width X: Horizontal width of the beam in the inspection frame.
Width Y: Vertical width of the beam in the inspection frame.
X and *Y* Width are initially a pixel display. A true width is given [mm, etc.] after the conversion value is set.)
Peak Count: Value of the brightest pixel in the inspection frame.
Area: value for the area that the brightness is above the "Threshold".
Count Sum: Sum of brightness values in the inspection frame.



★4 The reference image you surround using a red and a light blue frames should be a letter, mark or a corner of an object.

Round shapes such as holes, "O" marks are preferred for more accurate alignment.